

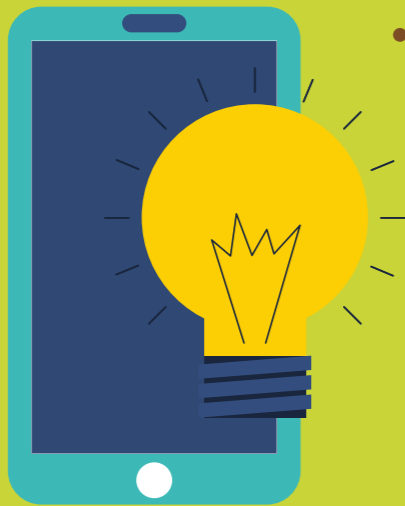


AN EDUCATION FOR LIFE AS GLOBAL CITIZENS

Awakening Seed School
2022

INNOVATIVE LEARNING

INNOVATIVE LEARNING



- interdisciplinary content studies that make accommodations for individual learners, allowing students to become self-directed experts in areas of interest
- rigorous education with a focus on creativity and innovation

SOCIAL JUSTICE

SOCIAL JUSTICE

- emphasis on community service, global citizenship, and leadership through projects that emphasize kindness, compassion, and leadership training



PLANETARY STEWARDSHIP

PLANETARY STEWARDSHIP

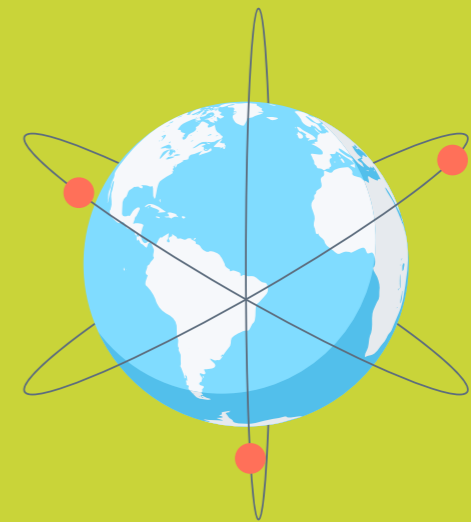


- active engagement with the natural environment, promoting scientific inquiry, gardening, sustainability practices, and planetary stewardship

COMMUNITY

COMMUNITY

- involvement in a supportive school community that fosters inclusion and celebration of uniqueness



LOVE AND LOGIC

- making good choices
- living with consequences of choices
- active listening the first time
- adults respond with empathy
- taking responsibility for actions
- living and working responsibly with others

SKILLSTREAMING

- specific guidance on social skills (e.g. sharing)
- coaching for how to be an advocate for self or others
- anti-bullying support
- practice using brave talk
- language modeling for successful social interactions

ARIZONA STANDARDS

- preschool lesson plans align with Arizona Early Learning Standards and Infant-Toddler Standards
- elementary classes align with Arizona College and Career Ready Standards
- prepares students for integration into public, charter or other private school settings



Awakening Seed School is an innovative, compassionate learning community that inspires global citizens by fostering curiosity, celebrating uniqueness and promoting social justice.